

UDC 553:52

## FEATURES OF FORMATION, MATERIAL COMPOSITION AND GEOLOGICAL STRUCTURE OF RARE METAL AND PEGMATITE DEPOSITS OF THE KALBA REGION ON THE EXAMPLE OF THE YUBILEINOE DEPOSIT

**Tatyana A. Oitseva**<sup>1,2</sup>,  
tatyana.oitseva@gmail.com

**Boris A. Dyachkov**<sup>1,3</sup>

**Ainel Ye. Bissatova**<sup>1</sup>,  
bisatova.ainelya@mail.ru

**Gulizat B. Orazbekova**<sup>4</sup>,  
orazbekova@bk.ru

**Stanislav S. Zinyakin**<sup>1</sup>,  
s.zinyakin@yandex.ru

<sup>1</sup> D. Serikbayev East Kazakhstan Technical university,  
69, Protozanov street, Ust-Kamenogorsk, 070004, Kazakhstan.

<sup>2</sup> LLP «Geos»,  
123-197, Protozanov street, Ust-Kamenogorsk, 070004, Kazakhstan.

<sup>3</sup> Altai Geological and Environmental Institute LLP,  
21, Karl-Liebknecht street, Ust-Kamenogorsk, 070004, Kazakhstan.

<sup>4</sup> Shakarim university Semey,  
20a, Glinka street, Semey, 071400, Kazakhstan.

**The relevance** of the research is caused by the lack of knowledge on the behavior of rare metal in pegmatite ore formation in the Kalba region and the need to expand the rare-metal mineral resource base of the region and to establish geological and mineragenic mapping.

**The aim** of the research is to identify the features of geotectonic development, geological structure and material composition of the rare-metal deposit Yubileinoe (Kalba region).

**Study area:** large industrial rare metal deposit Yubileinoe and its mineral complexes.

**Methods:** detailed geological-geochemical and mineralogical study of the region of work, use of materials from works of previous years, stock literature, as well as laboratory studies (mass spectrometric, microprobe, geochronological and other studies). The structural relationships of minerals with each other, as well as the geochemical interpretation of the results of laboratory studies, were taken into account during diagnosing mineral complexes.

**Results.** Spatial and genetic relationship of rare-metal pegmatite deposit (Nb, Ta, Be, Cs, Li, Sn) with granites of the I phase of the Kalba complex P<sub>1</sub> (285 Ma), is distinguished. In the location of the Yubileinoe deposit, the leading ore-controlling role is given to the system of deep latitudinal faults of ancient origin, renewed in the Hercynian cycle. A geological and genetic model of rhythmically pulsating rare-metal pegmatite formation of the Yubileinoe deposit is presented, which reflects the zonal development of mineral complexes from oligoclase-microcline (barren) to albite, greisen, spodumene-containing and pollucite-bearing (ore) with an increasing concentration of mineralization. Information was obtained on the composition of pegmatite ores with the release of typomorphic minerals (clevelandite, lepidolite, colored tourmalines, spodumene, pollucite, ixiolite, etc.) and the main geochemical elements of rare metal ore formation (Nb, Ta, Be, Cs, Li, F, P, etc.).

### Key words:

Kalba region, granitoid, Yubileinoe deposit, rare metals (Nb, Ta, Be, Cs, Li, etc.), modeling, forecasting.

### Introduction

The Kalba region is located in East Kazakhstan and, in terms of geotectonic zoning, is included in the general geostructure of the Great Altai (hereby GA) which is part of the Central Asian mobile belt [1, 2]. In the north-east it is limited by the Irtysh zone of crumpling, in the south-west along the Terehta fault it is separated from the West Kalba. The southeastern flank of the structure continues to China; in the northwest it is mainly overlain by a cover of loose deposits of the Kulunda depression. Kalba granitoid belt of the northwestern direction is formed in the Hercynian cycle in a post-collisional (orogenic) geodynamic setting – the spatial-genetic relationship of the

leading geological-industrial type of rare-metal pegmatites deposits (Nb, Ta, Be, Cs, Li, Sn) with medium-coarse-grained biotite phase I granites of the Kalba complex (P<sub>1</sub>, 285 million years) [3, 4]. The study of the mineralogical composition of Kalba pegmatites was greatly contributed by A.I. Ginzburg, V.D. Nikitin, S.G. Shavlo, N.A. Solodov, V.I. Kuznetsov, Yu.A. Sadovsky, V.A. Filippov and others. In metallogenic terms, this is the major rare metal structure of East Kazakhstan, the prospects of which have not yet been exhausted. The features of the formation, material composition and geology of this structure will be considered on the example of the Yubileinoe deposit, located in Central Kalba and being a

large industrial rare metal deposit. At present, the most important task is to forecast and search for new rare metal objects in order to strengthen the raw material base for rare metal production enterprises [5].

#### Materials and methods

The study included field and analytical work. Extensive materials of geological-surveying, prospecting and exploration works carried out in different years in the study area were used [6–8].

The samples for laboratory research were taken from ore-bearing rocks and rare-metal pegmatites of the Yubileinoe deposit (more than 200 samples). As a sample, fragments of samples, the remains of core samples were taken, the furrows of the ditches were retested. Analytical studies were carried out in the VERITAS laboratory of the D. Serikbaev East Kazakhstan Technical University (Ust-Kamenogorsk). The chemical composition of minerals were analyzed on the Agilent 7500cx ICP-MS mass spectrometer from Agilent Technologies (Agilent Technologies, Santa Clara, CA, USA) and an MC-46 Cameca microprobe (Cameca, Gennevilliers, France), which determined 73 elements with high sensitivity (Cu, Pb, Zn, Au, Ag, Cd, Pt, In, Ir, Y, Yb, TR, etc.), on Jeol-100C scanning electron microscopes with a KeveX-Ray energy-dispersive attachment and an ISM-6390 LV from Jeol with an INCA Energy attachment from OXFORD, which also studied fluid inclusions of ore and associated minerals, and also determined impurity elements (Au, Ag, Sb, As, Pt, In, U, etc.) in them.

Geochronological studies were carried out using the step heating method  $40\text{Ar}/39\text{Ar}$ . The analyzes were performed at the Institute V.S. Sobolev (Novosibirsk, Russia). In total, more than 30 datings were performed. The isotopic composition of argon was measured on a Micro-mass Noble Gas 5400 mass spectrometer.

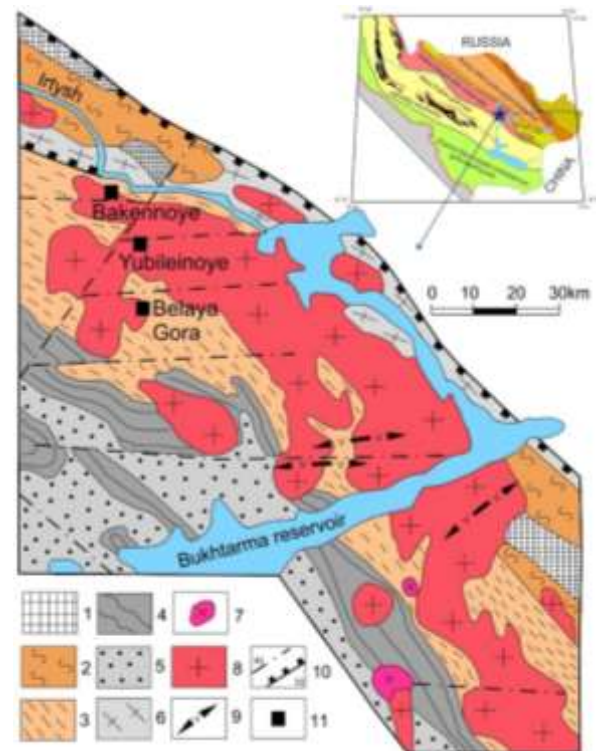
#### Geological structure of the Yubileinoe deposit

The largest rare-metal (Ta, Nb, Be, Li, Sn, W) deposits of the GA are located in the Kalba-Narym metallogenic zone [3, 9, 10]. The belt comprises the Shulba, Northwest Kalba, Central Kalba, and Narym ore districts. Central Kalba is the richest district, with many large pegmatitic rare-metal deposits (Bakennoe, Belaya Gora, Yubileinoe, etc.), which were operated by the Belogorsk Mining and Processing Combine before 1994 but have been suspended since then (Fig. 1).

Pegmatitic rare-metal mineralization in the Central Kalba district is spatially and genetically associated with Early Permian ( $P_1$ ) postcollisional granite magmatism (Kalba complex) [4, 11–13]. The deposits occur in the zoned Ognev-Bakenny (Ognevskoe, Bakennoe, et.), Asubulak (Yubileinoe, Ungursay, Karmen-Kuus, etc.), and Belogorsk-Baimurza (Belaya Gora, Upper Baimurza, etc.) fields controlled by systems of W-E large faults with pinnate fractures and faults.

The Yubileinoe deposit was discovered in 1955 by G.I. Kazaryan, P.I. Vershkov and V.A. Filippov. Later it was studied by many geologists (K.I. Ivanova, E.P. Pushko, M.M. Ukolov, V.K. Remez, V.V. Lopatnikov, etc.). It is spatially located in the hanging side of the

Asubulak ore field, controlled by a sublatitudinal deep fault (Fig. 1) [6–9].



**Fig. 1.** Simplified geology of the Central Kalba ore district. Performed on the material of B.A. Dyachkov [10]: 1 – amphibolites and gneisses ( $PR?$ ); 2 – greenschist metamorphic rocks ( $D_{1-2}$ ); 3 – carbonaceous sandstones, siltstones, and slates ( $D_3$ ); 4 – carbonaceous-calcareous-clastic flysch ( $C_{1V2-3}$ ); 5 – siltstones, sandstones, and graywacke ( $C_{1s}$ ); 6 – migmatites and gneiss granites ( $C_1$ ); 7 – plagiogranites and granodiorites,  $C_3$ ; 8 – granites of phase 1 Kalba complex ( $P_1$ ); 9 – gabbro, dolerites, granites, and porphyry ( $P_2-T_1$ ); 10 – faults that control mineralization (a) and boundary of Irtysh shear zone (b); 11 – pegmatite deposits

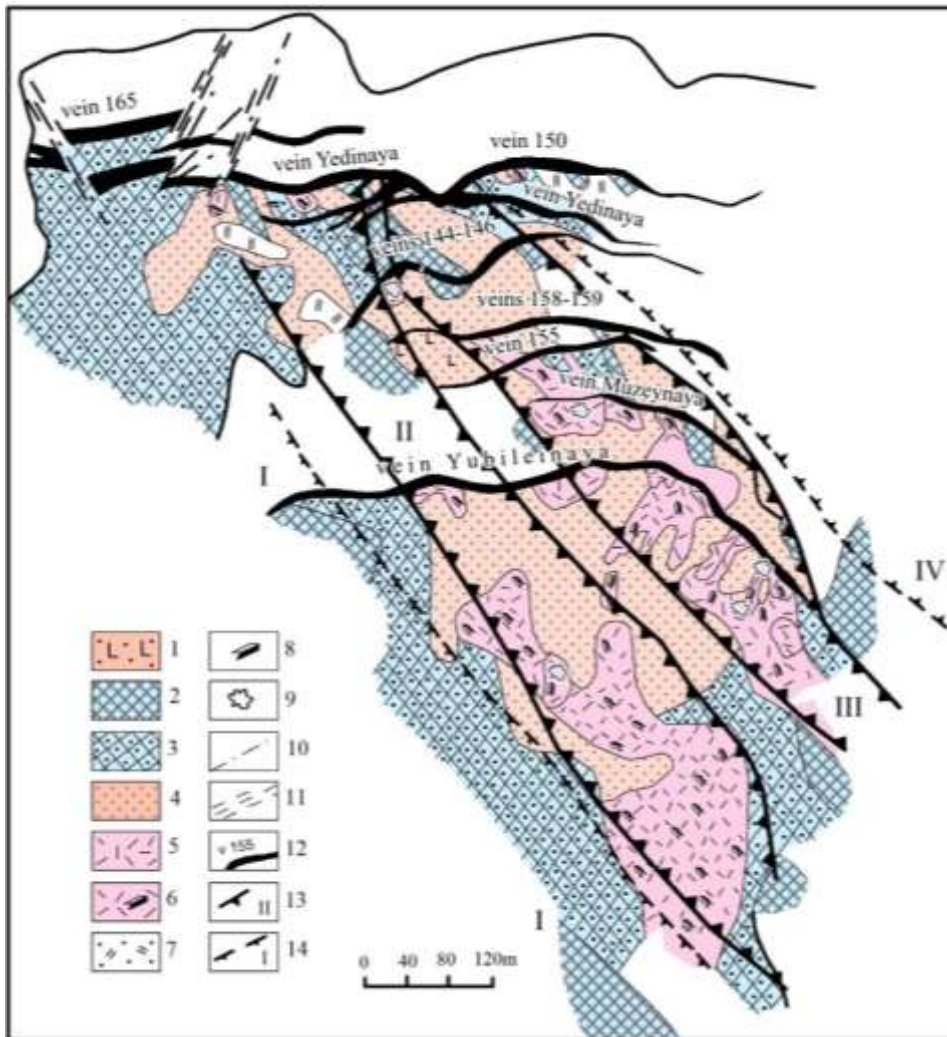
**Рис. 1.** Схема геологического строения Центрально-Калбинского рудного района [10]: 1 – амфиболито-гнейсовая формация ( $PR?$ ); 2 – метаморфизованные «зеленсланцевые» отложения ( $D_{1-2}$ ); 3 – углеродисто-песчаниково-алевролитовая, аспидная ( $D_3$ ); 4 – флишиодная углеродисто-известковисто-терригенная ( $C_{1V2-3}$ ); 5 – граувакковая алевролито-песчаниковая ( $C_{1s}$ ); 6 – мигматит-гнейсогранитовая ( $C_1$ ) формации; 7 – плагиогранит-гранодиоритовая,  $C_3$ ; 8 – граниты первой фазы калбинского комплекса ( $P_1$ ); 9 – габбро-диабаз-гранит-порфировая формация ( $P_2-T_1$ ); 10 – рудоконтролирующие разломы (a) и граница Иртышской зоны смятия (b); 11 – пегматитовые месторождения

The pegmatite field is confined to large troughs of the roof of the Tastube and Priirtysh granite massifs, dissected by faults. The ore field is elongated in the sublatitudinal direction for 8–10 km with a width of 2–3 km. In its structure, hornfelsed sandstone-siltstone deposits of the slate formation (Takyr suite,  $D_3$ ) and plagiogranites ( $C_3$ )

are fragmentarily fixed, but most of the ore field is occupied by granites of the Kalba complex (P<sub>1</sub>), represented by two intrusive phases [3, 13–15]. The first phase is medium-coarse-grained porphyritic biotite granites, the second phase is medium-uniform-grained muscovitized (two-mica granites). The ores were deposited during multiple tectonic events under compression and extension cycles, which provided cyclic inputs of pegmatite-forming fluxes and metasomatic replacement of previous mineral assemblages in pegmatite veins [16, 17].

According to previous researchers (T.M. Nikitina, B.A. Dyachkov, A.E. Ermolenko, etc.), thickness varia-

bility and uneven distribution of rare elements (Ta, Li, Sn, etc.) along the strike and dip of ore deposits are revealed with the construction of horizontal plans and the calculation of isopowers and isoconcentrations of rare elements [4–9]. Based on this, a linear-nodal distribution of rare-metal mineralization is determined at the Yubileinoe deposit with ore concentration maxima in its thickened parts and at the intersection of ore-localizing fracture structures with the formation of ore-bearing bands or ore belts of northwestern strike (Fig. 2). The distance between the ore belts is 200–300 m, their inclination in the southeast direction at an angle of 20°.



**Fig. 2.** Plan of distribution of mineral complexes along the pegmatite veins of the Yubileinoe deposit. Performed by T.A. Oitseva based on materials [6]. Mineral complexes: 1 – microcline oligoclase with albite; 2 – microcline; 3 – microcline-albite; 4 – albite; 5 – spodumene-bearing; 6 – spodumene-clevelandite-quartz; 7 – quartz-albite-muscovite (greisen). Minerals: 8 – spodumene; 9 – lepidolite in association with pollucite, petalite, colored tourmalines; 10 – discontinuous violations (post labor); 11 – zones of increased fracturing; 12 – ore veins and their names. Ore belts: 13 – installed; 14 – alleged, and their numbers

**Рис. 2.** План распределения минеральных комплексов по пегматитовым жилам Юбилейного месторождения. Выполнено Т.А. Ойцевой по материалам [6]. Минеральные комплексы: 1 – олигоклаз микроклиновыи с альбитом; 2 – микроклиновыи; 3 – микроклин-альбитовыи; 4 – альбитовыи; 5 – сподумен-кварцевыи; 6 – сподумен-содержащие; 7 – кварц-альбит-мусковитовыи (грейзеновыи). Минералы: 8 – сподумен; 9 – лепидолит в ассоциации с поллуцитом, петалитом, цветными турмалинами; 10 – разрывные нарушения (пострудные); 11 – зоны повышенной трещиноватости; 12 – рудные жилы и их названия. Рудные ленты: 13 – установленные; 14 – предполагаемые, и их номера

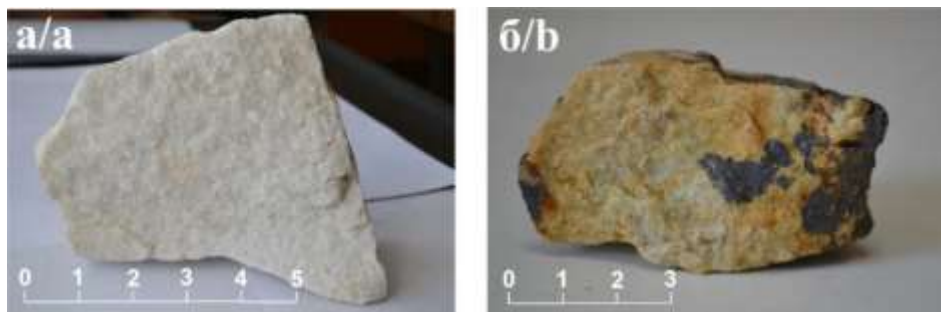
### Results of the study of leading mineral complexes

The zonal distribution of mineral complexes in pegmatites of Yubileinoe deposit is clearly manifested, which was noted in the works of N.A. Solodov, V.A. Filippov, D.Ya. Aizderzis, E.P. Pushko, A.M. Smirnov and other researchers. The characteristics of the leading mineral complexes are given [3, 9, 18, 19].

The *albite complex* is widely developed. It is composed mainly of albite (95 %) with an insignificant admixture of quartz (up to 5 %), muscovite, tourmaline, garnet and other minerals. Outwardly, it is a rock of massive appearance, white, composed mainly of fine-grained and sugary albite (Fig. 3, *a*). They contain tantalite-columbite in the form of fine dissemination (up to 0,5 mm in size), prismatic crystals of dark brown and black color. Less commonly, cassiterite crystals of a dipyramidal-prismatic appearance of various colors from reddish-brown and pale green to colorless are observed. A distinctive feature of the complex is its enrichment

with phosphates of Li, Mn, Fe, forming nests, lenses and black spots (Fig. 3, *b*).

The varieties of this complex are found in the central parts, hanging and recumbent sides of pegmatite veins. In crusts, they contain (in grams per ton): tantalite-columbite (263), cassiterite (452,8), minerals of the samarskite-fergusonite group (33,7). Apatite, garnet, tourmaline (scherl and verdelite) and phosphates of Li, Mn, Fe are also characteristic. Spodumene, zircon, sphalerite, corundum, fluorite and biotite are also noted. In lithium phosphates, the contents of P, Li, Mn (more than 1 %) and rare elements (wt. %) are increased: Ta (0,08–0,1), Sn (0,01–0,3), Be (up to 0,01), significant contents of Mo, As, Sb, Zn are noted. According to the results of mass spectrometric analysis, albite is slightly enriched in rare elements (in grams per ton): Ta (26,33), Sn (22,88), Nb (67,43). The content of rare alkalis reaches: Li (112,3), Rb (381,4) and Cs (19,6).



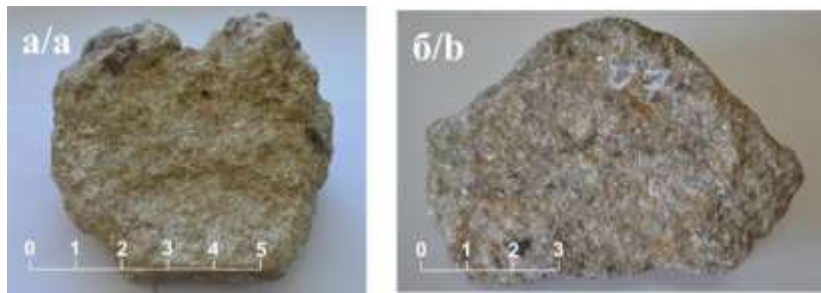
**Fig. 3.** Typomorphic minerals of the albite complex: *a*) massive sugar albite; *b*) with phosphates of lithium and manganese  
**Рис. 3.** Типоморфные минералы альбитового комплекса: *a*) сахаровидный альбит массивного облика; *b*) с фосфатами лития и марганца

In albitized pegmatites with spodumene, the concentrations of Li (3664) and Sn (up to 110 grams per ton) are increased. BSE images in pegmatites with lithium and manganese phosphates are dominated by albite; inclusions of fluorapatite containing scheelite impregnation ( $\text{WO}_3$  – 59,85 %) are characteristic. Quartz, muscovite, tourmaline and sphalerite are also noted (Zn – 50,27 %). Among the lithium-bearing manganese minerals of the triphillite-lithiophyllite group –  $\text{Li}(\text{Fe}_2+\text{Mn}_2)(\text{PO}_4)_2$ , syclerite ( $\text{LiMn}_2+\text{PO}_4$ ) was first discovered. New formations of sodium and calcium-containing manganese phosphates were determined: firefeldite  $\text{Ca}_2\text{Mn}(\text{PO}_4)_2$ , natrophyllite ( $\text{P}_2\text{O}_5$  – 40,88;  $\text{MnO}$  – 29,27 и  $\text{Na}_2\text{O}$  – 10,16 %) and beusite (Ca – 34,47; P – 13, 48 %) associated with albite, pyrolusite, and quartz.

Ore minerals are represented by microinclusions of tantalite (ferrotantalite), in which  $\text{Ta}_2\text{O}_5$  prevails over  $\text{Nb}_2\text{O}_5$  (4,59 times), and the FeO content (13,64 %) is significantly higher than MnO (1,58 %). Beryl forms crystals (more than 300 microns in size), which are intersected by quartz and contain inclusions of pyrolusite and muscovite. In general, the albite complex is geochemically specialized in Nb, Ta, Be, Sn, Li, in practical terms it is accompanied by ordinary ores ( $\text{Ta}_2\text{O}_5$  of about 100 grams per ton), accounting for about 12 % of the total reserves of rare metals in the Yubileinoe deposits.

The *quartz-albite-muscovite (greisen) complex* occurs locally in different parts of the veins. In the inner zones, it is associated with the albite-spodumene complex. Outwardly, it is a coarse-grained greisen of greenish color, consisting mainly of muscovite (more than 50 %), quartz and albite (Fig. 4).

Typomorphic indicator minerals are green muscovite, fluorapatite, apatite, and green tourmaline (verdelite). Spodumene is rare. Ore minerals are represented by dissemination of tantalite, ixiolite ( $\text{Ta, Nb, Sn, Fe, Mn}_4\text{O}_8$ , uranium-bearing microlite (Ta – 31,33; U – 4,46–6,57), cassiterite, zincite and others. Tantalite-columbite forms lamellar and tabular black crystals. Apatite in crushes is noted in the form of fragments of prismatic crystals of various colors (2458 grams per ton), fine-crystalline apatite with an impurity of  $\text{Li}_2\text{O}$  – 0,54 %. A distinctive feature of the greisen complex is its enrichment in tantalum (the average  $\text{Ta}_2\text{O}_5$  content is more than 0,3 %). According to spectral analyzes, the Ta content reaches 0,5–1 %, and in tantalite crushes – 4460 grams per ton. In the greisens of the vein, the single concentration of tantalite is 2564,3 grams per ton. Abnormal contents of tantalum in greisens have been established at other pegmatite objects: Ungursai ( $\text{Ta}_2\text{O}_5$  – 1500 grams per ton,  $\text{Nb}_2\text{O}_5$  – 125 grams per ton) and Kwartsevo in North-West Kalba ( $\text{Ta}_2\text{O}_5$  up to 0,225 %).



**Fig. 4.** Typical samples of quartz-albite-muscovite (greisen) complex in the Yubileinoe deposits: a) greisen of greenish-gray color; b) greisen with muscovite and impregnated tantalite

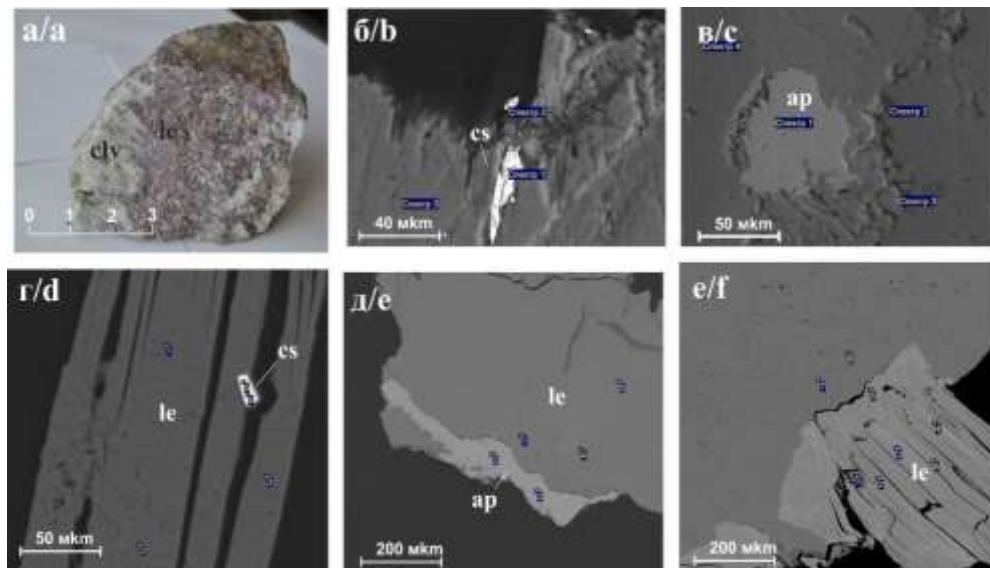
**Рис. 4.** Типичные образцы кварц-альбит-мусковитового (грейзенового) комплекса на Юбилейном месторождении: а) грейзен зеленовато-серой окраски; б) грейзен с мусковитом и вкрапленностью танталита

*Spodumene-bearing complexes* are the main concentrators of rare-metal mineralization. New research results show that the most productive are quartz-clevelandite-spodumene-lepidolite (colored) and quartz-clevelandite-lepidolite-pollucite complexes and their varieties [10, 20, 21]. Similar pegmatites are widespread in other rare-metal provinces [22–27]. The main feature is the complexity of the composition of pegmatites containing unique minerals of several generations (clevelandite, lepidolite, spodumene, petalite, amblygonite, pollucite, colored tourmalines, cassiterite, tantalite-columbite, manganotantalite, microlite, etc.) and rich complex ores (Sn+Ta+Cs+Li). The following minerals are among the most leading indicators of rare metal pegmatite formation.

*Micas* are widespread in all mineral complexes of the Yubileinoe deposit and other rare-metal objects of Kalba. An increased lithium content of micas was found not only in lepidolite, but also in transparent muscovites. They are also enriched in Ta, Nb, Be, Rb, Cs, Sn, W and are prospecting indicators of rare-metal mineralization.

Greenish lithium-bearing muscovites (in association with fluorapatite and verdelite) indicate the enrichment of the quartz-albite-muscovite (greisen) complex with tantalum at the level of hurricane values (up to 0,3 % and more). On a scanning microscope in muscovites, fluid microinclusions of tantalite, cassiterite, fluorapatite, ilmenite and galena (in the first units and tens of microns) are observed. Cryptocrystalline varieties of muscovite (gilbertite) of the Karmen-Kuus ore occurrence are enriched in rare alkalis (Li+Rb+Cs=12576 grams per ton) with the content of Sn (149 grams per ton) and Ta (18,5 grams per ton).

*Lepidolite* is the main indicator of a productive quartz-clevelandite-lepidolite (colored) complex (Fig. 5, a). It is represented by two varieties: 1) large- and medium-scaled, forming large aggregates in association with clevelandite and quartz; 2) fine-hidden scaly, fixed in the form of metamorphic quartz-lepidolite nests among other minerals.



**Fig. 5.** Microinclusions of minerals from the greisen complex of the Yubileinoe deposit. Analyst I.V. Aborneva. a) replacement of lamellar clevelandite by lepidolite; b) larger micrograins of vein-shaped cassiterite in lepidolite; c) relict grain of apatite corroded by albite and lepidolite; d) inclusion of cassiterite in lepidolite; e) micrograin apatite in the rim of lepidolite; f) lepidolite plate

**Рис. 5.** Микровключения минералов грейзенового комплекса Юбилейного месторождения. Аналитик И.В. Аборнева. а) замещение лепидолитом пластинчатого клеветандита; б) более крупные микрозерна касситерита прожилковой формы в лепидолите; в) реликтовое зерно апатита, разъедаемое альбитом и лепидолитом; г) включение касситерита в лепидолите; д) микрозерно апатита в оторочке лепидолита; е) пластинка лепидолита

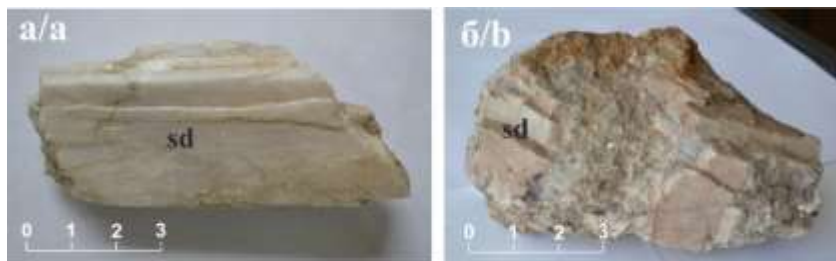
Lepidolite is characterized by a high Li content (up to 16240 grams per ton); at the micro level, inclusions of cassiterite, fluorapatite, apatite and scheelite are noted in it (Fig. 5, b–f). In this complex, according to the results of mass spectrometry, anomalous contents (grams per ton) were determined: Nb (1940), Ta (248,7), Rb (4746), Li (7160), P (3357), Sn (80,54), at low values of W (2,44) and Mo (1,2). Significant contents of Ag (0,51), Sb (2,9), Au (0,30), Pd (0,12), Bi (0,34), Tl (7,82), In (0,24). According to the BSE microanalysis, the complex consists (%) mainly of SiO<sub>2</sub> (49–52), Al<sub>2</sub>O<sub>3</sub> (24–28), K<sub>2</sub>O (10,9), F (5,6–6,4), impurity WO<sub>3</sub> (1,35–3,25) and other components.

*Spodumene* from the pyroxene group (Li, Al[Si<sub>2</sub>O<sub>6</sub>]) is one of the major indicator minerals of rare metal pegmatite formation. It forms prismatic crystals of a plank appearance (up to 0,5 m in size) of yellowish-white and beige color, glassy luster, with secondary changes acquiring a pinkish color. Aggregate clusters with an oriented distribution of spodumene crystals associated with quartz, cleveandite, and amblygonite are noted (Fig. 6). The

main crystallographic faces of the spodumene prism m {110} and the pinacoid a {110}.

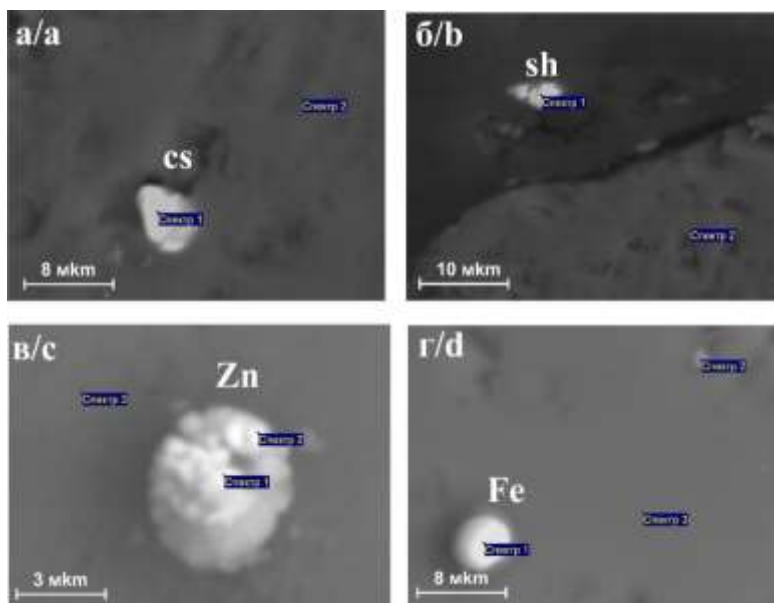
At the microlevel, it contains inclusions of cassiterite (Sn – 34,51 wt. %), scheelite with tantalum impurity (W – 45,67; Ta – 10,27) and native iron (with Zn impurity – 13,38; Pb – 7,53) (Fig. 7).

According to the ICP-MS results, rare earths in spodumene are represented mainly by the lanthanide group of elements (12 grams per ton). The content of chalcophilic elements reaches (grams per ton): Cu (107,3), Zn (116,4), Pb (410,6), Sb (40,3), Ag (17,5), Au (0,35), Pd (0,31). Above-high values of B, Ga, Ge, Tl were determined. Among the alkaline elements, Na (10722 grams per ton) is sharply prevalent. Content of Li (up to 16240 grams per ton), Sn (up to 448,87) with an uneven distribution of Ta, Nb, Be. In terms of high concentration, Li approaches the Koktogai deposit (China). The noble metal group of elements is represented by Ag (17,52), Au (0,22), Sb (40,30). Studies have shown that spodumene contains a wide range of rare elements (Li, Ta, Nb, Sn, W) and is one of the main indicator minerals of rare metal pegmatite formation.



**Fig. 6.** Типоморфные образцы шподумена лепидолит-шподумен-клевеландитового комплекса: а) призматический кристалл шподумена со стекляннм блеском; б) метасоматическое замещение шподумена кварц-альбит-слюдистым прожилком

**Рис. 6.** Типоморфные образцы шподумена лепидолит-шподумен-клевеландитового комплекса: а) призматический кристалл шподумена со стекляннм блеском; б) метасоматическое замещение шподумена кварц-альбит-слюдистым прожилком

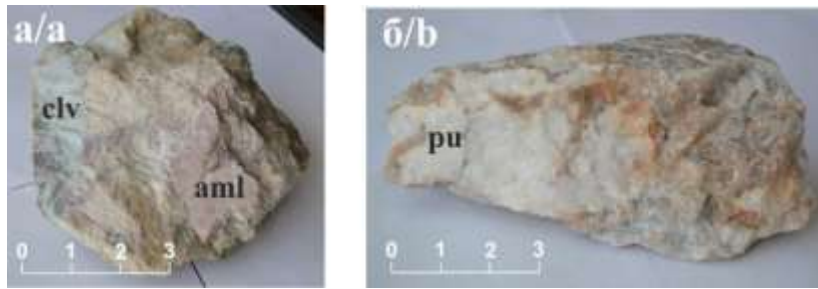


**Fig. 7.** Micro-inclusions in the spodumene of the Yubileinoe deposit. Analyst A.V. Rusakova. a) micrograin lumpy cassiterite; b) inclusion of scheelite; c) native iron with zinc admixture; d) native teardrop-shaped iron

**Рис. 7.** Микровключения в шподумене Юбилейного месторождения. Аналитик А.В. Русакова. а) микрозерно касситерита комковидной формы; б) включение шеелита; в) самородное железо с примесью цинка; г) самородное железо каплевидной формы

*Amblygonite*  $\text{LiAl}[\text{PO}_4]\text{F}$  is noted in the form of large prismatic crystals (up to 10–15 cm in size) with well-defined pinacoid faces. It is a typical lithium mineral of the colored

complex, associated with cleveandite, lepidolite, spodumene, pollucite and quartz, forms idiomorphic aggregates. When weathered, it becomes brownish-pink in color (Fig. 8).

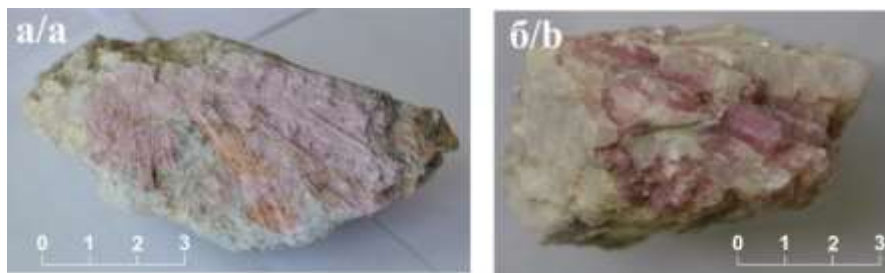


**Fig. 8.** Typical samples of amblygonite and pollucite of the colored complex: a) relict amblygonite crystal corroded by quartz and fine-flaked lepidolite; b) nest of white pollucite

**Рис. 8.** Типичные образцы амблигонита и поллуцита цветного комплекса: а) реликтовый кристалл амблигонита, корродируемый кварцем и мелкочешуйчатый лепидолитом; б) гнездо поллуцита белой окраски

Colored tourmalines are also informative minerals, differing in color, morphological characteristics and chemical composition. Black tourmalines (sheri) with a low content of trace elements reflect pegmatites of simple composition. The colored mineral complex contains ag-

gregates of dark green tourmalines of variable color, blue indigolite crystals, polychrome tourmalines, and pink rubellites (Fig. 9). Colored tourmalines are associated with cleveandite, lepidolite, pollucite and are indicators of rich rare metal ores (Ta, Nb, Be, Sn, Li, Cs).



**Fig. 9.** Rubellite crystals in pegmatites of the Yubileinoe deposit: a) radiant accumulations of rubellite; b) crystals of rubellite in quartz

**Рис. 9.** Кристаллы рубеллита в пегматитах Юбилейного месторождения: а) лучистые скопления рубеллита; б) кристаллы рубеллита в кварце

*Cleveandite* forms curved large-lamellar crystals of bluish-gray color, associated with quartz, lepidolite, spodumene, petalite, and other minerals (Fig. 10).

According to the BSE image data, cleveandite consists (in %) of  $\text{Na}_2\text{O}$  (11,48),  $\text{Al}_2\text{O}_3$  (20,1),  $\text{SiO}_2$  (67,28),  $\text{P}_2\text{O}_5$  (0,37),  $\text{K}_2\text{O}$  (0,16),  $\text{CaO}$  (0,18). It is characterized by a patchy openwork and veinlet dissemination of fluorapatite

( $\text{F} - 5,33$ ;  $\text{P}_2\text{O}_5 - 34,33$ ;  $\text{CaO} - 47,47\%$ ). According to the results of mass spectrometry, increased contents (grams per ton) were found in cleveandite: Li (348,15), Sn (353,3), Ta (17,59). The amount of rare earths is low (5,46 grams per ton) with a maximum Dy value (3,07 grams per ton). Other elements are represented (in grams per ton) mainly Fe (5573), Mn (110), Ti (87) and Cr (66).

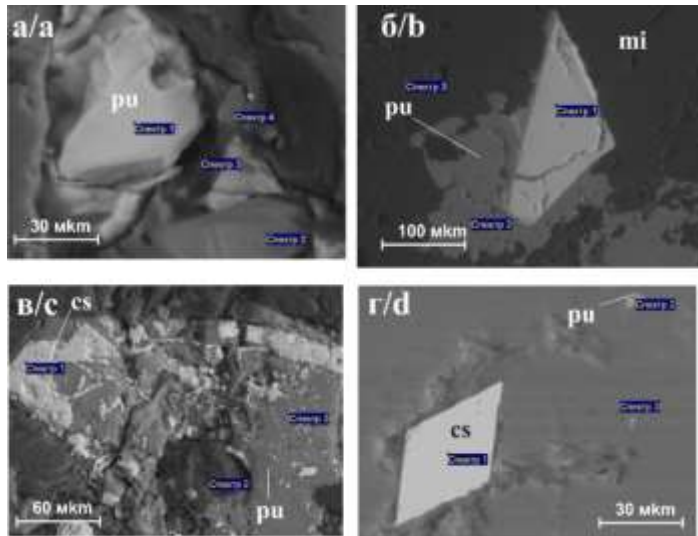


**Fig. 10.** Cleveandite varieties in quartz-spodumene-lepidolite (colored) complex: a) aggregates of bluish-gray cleveandite; b) cleveandite in association with quartz, large-lamellar lepidolite, and spotted petalite

**Рис. 10.** Разновидности клеветандита в кварц-сподумен-лепидолитовом (цветном) комплексе: а) агрегаты клеветандита голубовато-серого цвета; б) клеветандит в ассоциации с кварцем, крупнопластинчатым лепидолитом и петалитом пятнистой окраски

*Pollucite*  $Cs[AlSi_2O_6]$  belongs to the latest pegmatite minerals, closely associated with lithium-bearing micas, amblygonite, petalite, colored tourmalines, fluorapatite, cassiterite, and quartz. It is observed in the form of solid masses of milky white, fine and fine-grained structure, of-

ten of a sugar-like appearance. It is the main mineral of cesium ores, which were mined at the Yubileinoe deposit. The SEM image shows relatively large grains of pollucite (up to 100  $\mu m$  in size), which are intersected by microlite and late generation cassiterite (Fig. 11).



**Fig. 11.** Microinclusion of rare-metal minerals in pegmatites of the non-ferrous complex: a) micrograins of pollucite; b) intergrowth of tantalum-bearing microlite and pollucite; c) nested and vein accumulations of cassiterite in pollucite; d) cassiterite crystal in a Q-Al matrix

**Рис. 11.** Микровключения редкометалльных минералов в пегматитах цветного комплекса: а) микрзерна поллуцита; б) сросток танталоносного микролита и поллуцита; в) гнездовидные и прожилковые скопления касситерита в поллуците; г) кристалл касситерита в Q-Al матрице

*Tantalite* is the main ore mineral, represented by large black crystals and forms a fine dissemination (5–8 mm) in quartz, cleveandite, lepidolite, spodumene and other minerals. It is also noted in the form of irregular grains or

short-prismatic and tabular crystals of brownish-black color (Fig. 12). Several morphological varieties have been identified, differing in the appearance of crystals, chemical composition and distribution of impurity elements.



**Fig. 12.** Tantalum-bearing minerals of rare metal pegmatites: a) tantalite crystals; b) nested cluster of tantalite crystals in granular bud-shaped quartz

**Рис. 12.** Танталоносные минералы редкометалльных пегматитов: а) кристаллы танталита; б) гнездовидное скопление кристаллов танталита в зернистом почковидном кварце

Based on the results of analyzes at the Yubileinoe deposit, the following types of tantalites were identified: 1) manganotantalites –  $Mn(Ta,Nb)_2O_6$ , enriched in manganese (Mn/Fe ratio=10,3–16,9); 2) tapiolites of increased iron content –  $Fe(Ta, Nb)_2O_6$ ; 3) ixiolites with increased Sn content (more than 10 %) and 4) fluorine-containing microliths  $(Ta, Nb, Li, Sn, Fe, Mn)_4O_8$ . Tantalites are characterized by sodium alkalinity (Na/K=1,5–11,3), which in association with the composition of cleveandite and spodumene reflects the alkaline environment of ore deposition. The increased manganese content of tantalum-bearing minerals is confirmed by the results of BSE

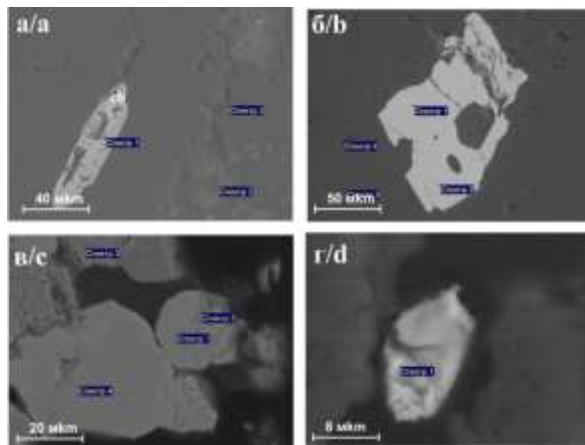
analyzes, the average MnO content (16,33 %) sharply prevails over FeO – 0,71 % (23 times).

The varieties of tantalum-bearing minerals at the micro level are shown in Fig. 13. Columbite is represented by columnar crystals (Nb/Ta>2,2 times). In the microlite, the Ta content is 52,23 wt. %, the W impurity content is 5,80; Ca – 4,07; F – 0,04 (Fig. 14, b). Uranium-bearing tantalite (Ta – 55,76; Nb – 3,18 wt. %), revealed Pb impurities – 8,09; U – 9,37), nanodispersed dissemination of Ta, W, U, Pb, Hf, Ca, Au are recorded, uranium rings are clearly manifested (Fig. 14, c). In a lumpy grain of manganotantalite (Fig. 14, d), the ratio of Mn, Nb and Ta is



1:2:3,2. In ixiolite, the weight contents of Ta (39,50), Sn (27,02), and Au (1,17 wt. %) were determined.

According to mass spectrometry data, the Ta/Nb coefficient in tantalum-bearing minerals varies from 0,36 to 5,92. The content of rare earths is low (REE up to 30 grams per ton) with a predominance of the light group of elements over the heavy (1,9–6,4 times). In microlites, characteristic impurity elements (grams per ton): Zr (up to 28140) and Hf (up to 8887), B (up to 320), Hg (11,03), U (up to 895) and In (up to 266,2) (for account of the admixture of cassiterite). For the first time, according to the results of electron microscopy in tantalites, the weight contents of noble metal elements (Au, Ag, Pt, Ir, Cd, Sb), in particular Au, more than 50 grams per ton, were determined. Thus, in the course of the evolution of the pegmatite process, there was a change in the composition and an increase in the varieties of tantalum-bearing minerals from columbite and ferritantantalite to tantalite-columbite, manganotantalite, ixiolite and microlite with an increased concentration of tantalum in later mineral complexes.



**Fig. 13.** Microinclusions of tantalum-bearing minerals in rare metal pegmatites: a) columbite crystal; b) micrograin microlite; c) uranium-bearing tantalite; d) submicroscopic inclusion of manganotantalite

**Рис. 13.** Микровключения танталоносных минералов в редкометалльных пегматитах: а) кристалл колумбита; б) микрозерно микролита; в) ураноносный танталит; г) субмикроскопическое включение манганотанталита

### Conclusion

New data have been obtained on the formation patterns, features of the material composition of ores of Yubileinoe rare-metal pegmatite deposit and its geological structure. Based on geological, geochemical and miner-

alogical studies, information was obtained on the composition of pegmatite ores with the release of typomorphic minerals (clevelandite, lepidolite, colored tourmalines, spodumene, pollucite, ixiolite, etc.) and main geochemical elements of rare metal ore formation (Nb, Ta, Be, Cs, Li, F, P, etc.).

New studies of the material composition of pegmatites were carried out by the authors using modern laboratory methods to study typomorphic minerals and geochemical elements of a rare-metal pegmatite formation of the Yubileinoe deposit as an example. Rare metal pegmatites were formed as a result of the multistage development of metasomatic processes: microclinisation, accompanied by the formation of block microcline pegmatites and mineral paragenesis (block quartz and microcline, large-lamellar muscovite, columbite and beryl); albitisation, which is associated with the formation of albitemicrocline and albite mineral complexes, which are the matrix of rare-metal pegmatite veins with ordinary beryllium-tin-tantalum ores; greisenisation, fixed by a quartz-albite-muscovite complex, in the inner parts of pegmatite veins; typomorphic minerals – green lithium-bearing muscovite, fluorapatite, verdelite, tantalite-columbite, and cassiterite; spodumenisation, manifested by new formation of the most productive mineral complexes (quartz-spodumene, quartz-spodumene-clevelandite, quartz-clevelandite-spodumene-lepidolite, etc.).

The general evolution of pegmatite formation was accompanied by a more complex shape and increase in the thickness of pegmatite veins, increase in the amount of ore and accompanying minerals, concentration of rare metal mineralization (Ta, Li, Sn) and increase in the contents of Zr, Hf, U, TR.

*The study was supported by Geology Committee of the Ministry of Ecology, Geology and Natural Resources of the Republic of Kazakhstan (grants BR10264558).*

*The authors express their sincere gratitude to Dr. Sc., professor of the Russian Academy of Sciences Alexander G. Vladimirov, Dr. Sc., professor Boris A. Dyachkov, Dr. Sc., Sergey Z. Smirnov, Cand. Sc. Marina A. Mizernaya, Cand. Sc. Nikolai N. Kruk for consultations on the structural position of the area of work, as well as for participation in joint geological and geochronological research of Ph.D. Oksana N. Kuzmina., Dr. Sc. Sergey V. Khromykh, Dr. Sc. Irina Yu. Annikova, Dr. Sc. Pavel D. Kotler, Dr. Sc. Evgeny I. Mikhnev. Special thanks should be paid to the specialists of the laboratory of engineering profile «VERITAS» and the Institute of Geology and Mineralogy SB RAS named after V.S. Sobolev for help in carrying out analytical work, namely to Aidar B. Sadibekov, Alena V. Rusakova, Stanislav N. Polezhaev, Nikolai S. Karmanov, Irina Vladimirovna Aborneva.*

### REFERENCES

1. Buslov M.M. Tectonics and geodynamics of the Central Asian fold belt: the role of Late Paleozoic large-amplitude strike-slip faults. *Russian Geology and Geophysics*, 2011, vol. 52, no.1, pp. 66–90. In Rus.
2. Safonova I. The Russian-Kazakh Altai orogen: an overview and main datatable issues. *Geoscience Frontiers*, 2014, no. 5, pp. 537–552.
3. Shcherba G.N., Stuchevsky N.I., Nakhtigal G.P., Antonenko A.N., Lyubetsky V.N. *Bolshoy Altay (geologiya i metallogeniya). Geologicheskoe stroenie [Greater Altai (geology and metallogeny). Geological structure]*. Almaty, Gylm, 1998. 304 p.
4. Kotler P.D., Khromykh S.V., Kruk N.N., Min Sun, Pengfei Li, Khubanov V., Semenova D., Vladimirov A.G. Granitoids of the Kalba batholith, Eastern Kazakhstan: U–Pb zircon age, petrogenesis and tectonic implications. *Lithos*, 2021, vol. 388–389, 106056.
5. Dyachkov B.A., Oitseva T.A., Kuzmina O.N., Bisatova A.E. Prospect for expansion and replenishment of rare metal resources and reserves in eastern Kazakhstan. *Gornyi Zhurnal*, 2021, no. 8, pp. 90–95. In Rus.
6. Nikitina T.I., Ermolenko A.E. *Geologicheskoe stroenie i otsenka perspektiv Yubileynogo pegmatitovogo mestorozhdeniya Tsentralnoy Kalby [Geological structure and assessment of the prospects of the Yubileiny pegmatite deposit of Central Kalba]*. Ust-Kamenogorsk, Funds of MD «Vostkaznedra» Publ., 1987. 262 p.

7. Aitaliev Zh.A., Brach P.A., Bryushkov V.I., Ergaliev A.E., Shavlo S.G., Shcherba G.N. *Perspektivnye ploshchadi na olovo i redkie metally v Kalba-Narymskom rudnom rayone. Obyasnitelnaya zapiska k karte prognozov masshtaba 1:200000* [Promising areas for tin and rare metals in the Kalba-Narym ore district. Explanatory note to the map of forecasts at a scale of 1:200000]. Alma-Ata, Academy of Sciences of the Kazakh SSR, Funds of MD «Vostkaznedra», 1954. 232 p.
8. Melentiev G.B., Aizderdzis D.Ya. *Informatsionnaya zapiska «Novye dannye o perspektivakh rayona Asu-Bulakskogo i Baymurzinsko-Belogorskogo pegmatitovykh poley (V. Kazakhstan) na tantalovoe i tseziovoe orudnenie s rekomendatsiyami po napravleniyu poiskovo-razvedochnykh rabot»* [Information note «New data on the prospects of the Asu-Bulak and Baimurzinsko-Belogorsk pegmatite fields (V. Kazakhstan) for tantalum and cesium mineralization with recommendations for the direction of prospecting and exploration»]. Moscow, Academy of Sciences of the USSR, Funds of MD «Vostkaznedra» publ., 1973. 27 p.
9. Lopatnikov V.V., Izokh E.P., Ermolov P.V., Ponomareva A.P., Stepanov A.S. *Magmatizm i rudonosnost Kalba-Narymskoy zony Vostochnogo Kazakhstana* [Magmatism and ore content of the Kalba-Narym zone of East Kazakhstan]. Moscow, Nauka Publ., 1982. 248 p.
10. Dyachkov B., Oitseva T., Frolova O., Mataibaeva I., Kusmina O. Geotectonic position, and ore potential of intrusive-dyke belts in East Kazakhstan. *Proceeding of 17th International multidisciplinary scientific geoconference*. Bulgaria, SGEM, 2017. pp. 239–246.
11. Wang H., Gao H., Zhang X.-Y., Yan Q., Xu Yi., Kailin Zh., Rui D., Pei Li *Geology and geochronology of the super-large Bailongshan Li–Rb–(Be) rare-metal pegmatite deposit, West Kunlun orogenic belt, NW China*. *Lithos*, 2020, vol. 360–361, 105449.
12. Levashova E.V., Skublov S.G., Oitseva T.A., Dyachkov B.A., Li X.-H., Li Q.-L., Shatova N.V., Shatov V.V. First age and geochemical data on zircon from riebeckite granites of the Verkhnee Espe rare earth–rare metal deposit, East Kazakhstan. *Geochemistry International*, 2022, vol. 60, no. 1, pp. 1–15. In Rus.
13. Zagorskiy V.E., Makagon V.M., Shmakin B.M., Makrygna V.A., Kuznetsova L.G. *Redkometal'nyye pegmatity. Granitnyye pegmatity* [Rare Earth Pegmatites. Granitic Pegmatites]. Novosibirsk, Nauka Publ., 1997. Vol. 2, 285 p.
14. London D. Ore-forming processes within granitic pegmatite. *Ore Geology Reviews*, 2018, vol. 101, pp. 349–383.
15. Yarmolyuk V.V., Lykhin D.A., Kozlovsky A.M., Nikiforov A.V., Travin A.V. Age, composition of rocks, and geological setting of the Snezhnoe beryllium deposit: substantiation of the Late Paleozoic East Sayan rare-metal zone (on the example of Ulan-Tologai massif). *Petrology*, 2016, vol. 24, no. 5, pp. 515–536. In Rus.
16. Oitseva T.A., D'yachkov B.A., Kuzmina O.N., Bissatova A.Y., Ageyeva O.V. Li-bearing pegmatites of the Kalba-Narym metallogenic zone (East Kazakhstan): mineral potential and exploration criteria. *News of the Academy of sciences of the Republic of Kazakhstan*, 2022, vol. 1, no. 451, pp. 83–90.
17. Dyachkov B.A., Mizerny A.I., Mizernaya M.A., Kuzmina O.N., Oitseva T.A. Main types of gold deposits of the Eastern Kazakhstan. *International Multidisciplinary Scientific GeoConference Surveying Geology and Mining Ecology Management*. Bulgaria, SGEM, 2017. Vol. 7 (11), pp. 299–306.
18. Dittrich T., Seifert T., Schulz B., Hagemann S., Gerdes A., Pfänder J. *Archean rare metal pegmatites in Zimbabwe and Western Australia – geology and metallogeny of pollucite mineralisations*. Switzerland, Springer Cham, 2019. 125 p.
19. Tramm F., Wirth R., Budzyń B., Sláma J., Schreiber A. LA-ICP-MS and TEM constraints on the magmatic and post-magmatic processes recorded by the zircon-xenotime intergrowth in pegmatite (Piława Górna, Góry Sowie Block, SW Poland). *Lithos*, 2021, vol. 404–405, 106480.
20. Kuznetsova L.G. Interaction of crustal and mantle materials, sources of trace elements during the formation and evolution of Early Paleozoic Li-rich granite-pegmatite systems in southeastern Tuva. *Russian Geology and Geophysics*, 2018, vol. 59, Iss. 12, pp. 1660–1678.
21. Smirnov S.Z. *Flyuidnyy rezhim magmaticheskogo etapa razvitiya redkometal'nykh granitno-pegmatitovykh sistem: petrologicheskie sledstviya*. Avtoreferat Dis. Dokt. nauk [The fluid regime of crystallization of water-saturated granitic and pegmatitic magmas: a physicochemical analysis. Doc. Diss. Abstract]. Novosibirsk, 2015. 42 p.
22. Guangchun Fei, Julian F Menuge, Changsheng Chen, Yulong Yang, Yun Deng, Youguo Li, Luo Zheng. Evolution of pegmatite ore-forming fluid: the Lijiagou spodumene pegmatites in the Songpan-Garze Fold Belt, southwestern Sichuan province, China. *Ore Geology Reviews*, 2021, vol. 139, P. A, 104441.
23. Tkachev A. Evolution of metallogeny of granitic pegmatites associated with orogens throughout geological time. *Geological Society London Special Publications*, 2011, no. 350 (1), pp. 7–23.
24. Yong T., Hong W., Hui Zh., Lv Z.-H. K-feldspar composition as an exploration tool for pegmatite-type rare metal deposits in Altay, NW China. *Journal of Geochemical Exploration*, 2018, no. 185, pp. 130–138.
25. Tkachev A.V., Rundqvist D.V., Vishnevskaya N.A. Metallogeny of lithium through geological time. *Russian Journal of Earth Sciences*, 2018, vol. 18, no. 6, pp. 1–13.
26. Morozova L.N. Rare-metal pegmatites of the Soldat-Myl'k pegmatite field: geology, geochemistry of rare elements. *IOP Conference Series: Earth and Environmental Science*, 2020, 539, 012162.
27. Gonçalves A.O., Melgarejo J.C., Alfonso P., Amores S., Paniagua A., Buta Neto A., Alves Morais E., Camprubi A. The distribution of rare metals in the LCT pegmatites from the Giraul field, Angola. *Minerals*, 2019, 9 (10), 580.

Received: 24 December 2022.

Reviewed: 10 February 2023.

#### Information about the authors

**Tatyana A. Oitseva**, Ph.D., D. Serikbayev East Kazakhstan Technical university; leading geologist, LLP «Geos».

**Boris A. Dyachkov**, advanced doctorate, professor, D. Serikbayev East Kazakhstan Technical university; Academician of the National Academy of Sciences of the Republic of Kazakhstan, Altai Geological and Environmental Institute LLP.

**Ainel Ye. Bissatova**, Ph.D., researcher, D. Serikbayev East Kazakhstan Technical university.

**Gulizat B. Orazbekova**, Ph.D., senior lecturer, Shakarim university Semey

**Stanislav S. Zinyakin**, doctoral student, D. Serikbayev East Kazakhstan Technical university.

УДК 553:52

## ОСОБЕННОСТИ ФОРМИРОВАНИЯ, ВЕЩЕСТВЕННОГО СОСТАВА И ГЕОЛОГИЧЕСКОГО СТРОЕНИЯ РЕДКОМЕТАЛЛЬНЫХ ПЕГМАТИТОВЫХ МЕСТОРОЖДЕНИЙ КАЛБИНСКОГО РЕГИОНА НА ПРИМЕРЕ ЮБИЛЕЙНОГО МЕСТОРОЖДЕНИЯ

Ойцева Татьяна Анатольевна<sup>1,2</sup>,  
tatiana.oitseva@gmail.com

Дьячков Борис Александрович<sup>1,3</sup>

Бисатова Айнель Ержановна<sup>1</sup>,  
bisatova.ainelya@mail.ru

Оразбекова Гулизат Багдатовна<sup>4</sup>,  
orazbekova@bk.ru

Зинякин Станислав Сергеевич<sup>1</sup>,  
s.zinyakin@yandex.ru

<sup>1</sup> Восточно-Казахстанский технический университет им. Д. Серикбаева,  
Республика Казахстан, 070004, г. Усть-Каменогорск, ул. им. А. Протозанова, 69.

<sup>2</sup> Товарищество с ограниченной ответственностью «Геос»  
Республика Казахстан, 070004, г. Усть-Каменогорск, ул. им. А. Протозанова, 123-197.

<sup>3</sup> Алтайский геолого-экологический институт,  
Республика Казахстан, 070004, г. Усть-Каменогорск, ул. Карла-Либкнехта, 21.

<sup>4</sup> Государственный университет им. Шакарима,  
Республика Казахстан, 071400, г. Семей, ул. Глинки, 20а.

**Актуальность** исследования обусловлена недостаточной изученностью поведения редких металлов в процессе образования пегматитовых руд в Калбинском регионе, а также необходимостью расширения минерально-сырьевой базы редкометалльных месторождений региона с постановкой геологического и минерагенического картирования.

**Цель:** выявление особенностей геотектонического развития, геологического строения и вещественного состава редкометалльного месторождения Юбилейное (Калбинский регион).

**Объекты:** крупное промышленное редкометалльное месторождение Юбилейное и его минеральные комплексы.

**Методы:** детальное геолого-геохимическое и минералогическое исследование региона работ, использование материалов работ прошлых лет, фондовой литературы, а также проведение лабораторных исследований (масс-спектрометрические, микрондовы, геохронологические и другие исследования). При диагностике минеральных комплексов учитывались структурные взаимоотношения минералов между собой, а также геохимическая интерпретация результатов лабораторных исследований.

**Результаты.** Выделяется пространственно-генетическая связь редкометалльно пегматитового месторождения (Nb, Ta, Be, Cs, Li, Sn) с гранитами I фазы калбинского комплекса P<sub>1</sub> (285 млн лет). В размещении Юбилейного месторождения ведущая рудоконтролирующая роль придается системе глубинных широтных разломов древнего заложения, подновленных в герцинский цикл. Приводится геолого-генетическая модель ритмично-пульсационного редкометалльного пегматитообразования Юбилейного месторождения, отражающая зональное развитие минеральных комплексов от олигоклаз-микроклиновых (безрудных) до альбитовых, грейзеновых, сподуменсодержащих и поллуцитоносных (рудных) с возрастающей концентрацией оруденения. Получена информация о составе пегматитовых руд с выделением типоморфных минералов (клевеландит, лепидолит, цветные турмалины, сподумен, поллуцит, иксиолит и др.) и главных геохимических элементов редкометалльного рудообразования (Nb, Ta, Be, Cs, Li, F, P и др.).

### Ключевые слова:

Калбинский регион, гранитоиды, Юбилейное месторождение, редкие металлы (Nb, Ta, Be, Cs, Li, и др.), моделирование, прогнозирование.

Работа выполнена при поддержке Комитета геологии Министерства экологии, геологии и природных ресурсов Республики Казахстан (грант BR10264558).

Авторы выражают искреннюю благодарность доктору геолого-минералогических наук, профессору РАН Александру Геннадьевичу Владимирову, доктору геолого-минералогических наук, профессору Борису Александровичу Дьячкову, доктору геолого-минералогических наук Сергею Захаровичу Смирнову, кандидату геолого-минералогических наук Марине Александровне Мизерной, кандидату геолого-минералогических наук Николаю Николаевичу Крук за консультации о структурном положении района работ, а также благодарят за участие в совместных геологических и геохронологических исследованиях доктора PhD Оксану Николаевну Кузьмину, кандидата геолого-минералогических наук Сергея Владимировича

*Хромых, кандидата геолого-минералогических наук Ирину Юрьевну Анникову, кандидата геолого-минералогических наук Павла Дмитриевича Котлера, кандидата геолого-минералогических наук Евгения Игоревича Михеева. Особую благодарность необходимо высказать специалистам лаборатории инженерного профиля «VERITAS» и Института геологии и минералогии СО РАН им. В.С. Соболева за помощь в проведении аналитических работ, а именно Айдару Бекадиловичу Садибекову, Алене Владимировне Русаковой, Станиславу Николаевичу Полежаеву, Николаю Семеновичу Карманову, Ирине Владимировне Аборневой.*

#### СПИСОК ЛИТЕРАТУРЫ

1. Буслев М.М. Тектоника и геодинамика Центрально-Азиатского пояса: роль позднепалеозойских крупноамплитудных сдвигов // Геология и геофизика. – 2011. – Т. 52. – № 1. – С. 66–90.
2. Safonova I. The Russian-Kazakh Altai orogen: an overview and main detatable issues // Geoscience Frontiers. – 2014. – № 5. – С. 537–552.
3. Большой Алтай (геология и металлогения). Геологическое строение / Г.Н. Щерба, Н.И. Стучевский, Г.П. Нахтигаль, А.Н. Антоненко, В.Н. Любецкий. Алматы: Гылым, 1998. – 304 с.
4. Granitoids of the Kalba batholith, Eastern Kazakhstan: U–Pb zircon age, petrogenesis and tectonic implications / P.D. Kotler, S.V. Khromykh, N.N. Kruk., Min Sun, Pengfei Li, V. Khubanov, D. Semanova, A.G. Vladimirov // Lithos. – 2021. – V. 388–389. – 106056.
5. Перспективы укрепления минерально-сырьевой базы редких металлов для предприятий Восточного Казахстана / Б.А. Дьячков, Т.А. Ойцева, О.Н. Кузьмина, А.Е. Бисатова // Горный журнал. – 2021. – № 8. – С. 90–95.
6. Никитина Т.И., Ермоленко А.Е. Геологическое строение и оценка перспектив Юбилейного пегматитового месторождения Центральной Калбы. – Усть-Каменогорск: Фонды МД «Востказнедра», 1987. – 262 с.
7. Перспективные площади на олово и редкие металлы в Калба-Нарымском рудном районе. Объяснительная записка к карте прогнозов масштаба 1:200000 / Ж.А. Айталиев, П.А. Брач, В.И. Брюшков, А.Е. Ергалиев, С.Г. Шавло, Г.Н. Щерба. – Алма-Ата: АН КазССР, Фонды МД «Востказнедра», 1954. – 232 с.
8. Мелентьев Г.Б., Айздердзис Д.Я. Информационная записка «Новые данные о перспективах района Асу-Булакского и Баймурзинско-Белогорского пегматитовых полей (В. Казахстан) на танталовое и цезиевое оруденение с рекомендациями по направлению поисково-разведочных работ». – М.: Академия наук СССР, Фонды МД «Востказнедра», 1973. – 27 с.
9. Магматизм и рудоносность Калба-Нарымской зоны Восточного Казахстана / В.В. Лопатников, Э.П. Изох, П.В. Ермолов, А.П. Пономарева, А.С. Степанов. – М.: Наука, 1982. – 248 с.
10. Geotectonic position, and ore potential of intrusive-dyke belts in East Kazakhstan / B. Dyachkov, T. Oitseva, O. Frolova, I. Mataibaeva, O. Kusmina // Proceeding of 17th International multidisciplinary scientific geoconference. – Bulgaria: SGEM, 2017. – P. 239–246.
11. Geology and geochronology of the super-large Bailongshan Li–Rb–(Be) rare-metal pegmatite deposit, West Kunlun orogenic belt, NW China / H. Wang, H. Gao, X.-Y. Zhang, Q. Yan, Yi. Xu, Zh. Kailin, D. Rui, Li Pei // Lithos. – 2020. – V. 360–361. – 105449.
12. First age and geochemical data on zircon from riebeckite granites of the Verkhnee Espe rare earth–rare metal deposit, East Kazakhstan / E.V. Levashova, S.G. Skublov, T.A. Oitseva, B.A. Dyachkov, X.-H. Li, Q.-L. Li, N.V. Shatova, V.V. Shatov // Geochemistry International. – 2022. – V. 60. – № 1. – P. 1–15.
13. Редкометалльные пегматиты. Гранитные пегматиты / В.Е. Загорский, В.М. Макагон, Б.М. Шмакин, В.А. Макрыгна, Л.Г. Кузнецова. – Новосибирск: Наука, 1997. – Т. 2. – 285 с.
14. London D. Ore-forming processes within granitic pegmatite // Ore Geology Reviews. – 2018. – V. 101. – P. 349–383.
15. Состав, источники и механизмы формирования редкометалльных гранитоидов позднепалеозойской Восточно-Саянской зоны щелочного магматизма (на примере массива Улан-Тологай) / В.В. Ярмолюк, Д.А. Лыхин, А.М. Козловский, А.В. Никифоров, А.В. Травин // Петрология. – 2016. – Т. 24. – № 5. – С. 515–536.
16. Li-bearing pegmatites of the Kalba-Narym metallogenic zone (East Kazakhstan): mineral potential and exploration criteria / T.A. Oitseva, B.A. D'yachkov, O.N. Kuzmina, A.Y. Bissatova, O.V. Ageyeva // News of the Academy of sciences of the Republic of Kazakhstan. – 2022. – V. 1. – № 451. – P. 83–90.
17. Main types of gold deposits of the Eastern Kazakhstan / B.A. Dyachkov, A.I. Mizerny, M.A. Mizernaya, O.N. Kuzmina, T.A. Oitseva // International Multidisciplinary Scientific GeoConference Surveying Geology and Mining Ecology Management. – Bulgaria: SGEM, 2017. – V. 7 (11). – P. 299–306.
18. Archean rare metal pegmatites in Zimbabwe and Western Australia – geology and metallogeny of pollucite mineralisations / T. Dittrich, T. Seifert, B. Schulz, S. Hagemann, A. Gerdes, J. Pfänder. – Switzerland: Springer Cham, 2019. – 125 p.
19. LA-ICP-MS and TEM constraints on the magmatic and post-magmatic processes recorded by the zircon-xenotime intergrowth in pegmatite (Piława Górna, Góry Sowie Block, SW Poland) / F. Tramm, R. Wirth, B. Budzyń, J. Sláma, A. Schreiber // Lithos. – 2021. – V. 404–405. – 106480.
20. Kuznetsova L.G. Interaction of crustal and mantle materials, sources of trace elements during the formation and evolution of Early Paleozoic Li-rich granite-pegmatite systems in southeastern Tuva // Russian Geology and Geophysics. – 2018. – V. 59. – Iss. 12. – P. 1660–1678.
21. Смирнов С.З. Флюидный режим магматического этапа развития редкометалльных гранитно-пегматитовых систем: петрологические следствия: автореф. ... дис. д-ра наук. – Новосибирск, 2015. – 42 с.
22. Evolution of pegmatite ore-forming fluid: the Lijiagou spodumene pegmatites in the Songpan-Garze Fold Belt, southwestern Sichuan province, China / Guangchun Fei, J.F. Menuge, Changsheng Chen, Yulong Yang, Yun Deng, Youguo Li, Luo Zheng // Ore Geology Reviews. – 2021. – V. 139. – P. A. – 104441.
23. Tkachev A. Evolution of metallogeny of granitic pegmatites associated with orogens throughout geological time // Geological Society London Special Publications. – 2011. – № 350 (1). – P. 7–23.
24. K-feldspar composition as an exploration tool for pegmatite-type rare metal deposits in Altay, NW China / T. Yong, W. Hong, Zh. Hui, Z.-H. Lv // Journal of Geochemical Exploration. – 2018. – № 185. – P. 130–138.
25. Tkachev A.V., Rundqvist D.V., Vishnevskaya N.A. Metallogeny of lithium through geological time // Russian Journal of Earth Sciences. – 2018. – V. 18. – № 6. – P. 1–13.
26. Morozova L.N. Rare-metal pegmatites of the Soldat-Myl'k pegmatite field: geology, geochemistry of rare elements // IOP Conference Series: Earth and Environmental Science. – 2020. – 539. – 012162.
27. The distribution of rare metals in the LCT pegmatites from the Giraul field, Angola / A.O. Gonçalves, J.C. Melgarejo, P. Alfonso, S. Amores, A. Paniagua, A. Buta Neto, E. Alves Morais, A. Camprubi // Minerals. – 2019. – 9 (10). – 580.

Поступила: 24.12.2022 г.

Прошла рецензирование: 10.02.2023 г.

**Информация об авторах**

**Ойцева Т.А.**, PhD, Восточно-Казахстанский технический университет им. Д. Серикбаева; ведущий геолог, Товарищество с ограниченной ответственностью «Геос».

**Дьячков Б.А.**, доктор геолого-минералогических наук, профессор Школы наук о Земле и окружающей среде, Восточно-Казахстанский технический университет им. Д. Серикбаева, Академик Национальной академии наук Республики Казахстан, Алтайский геолого-экологический институт.

**Бисатова А.Е.**, PhD, научный сотрудник Школы наук о Земле и окружающей среде, Восточно-Казахстанский технический университет им. Д. Серикбаева.

**Оразбекова Г.Б.**, PhD, старший преподаватель, факультет информационно-коммуникационных технологий, кафедра геодезии и картографии, Государственный университет им. Шакарима.

**Зинякин С.С.**, докторант Школы наук о Земле и окружающей среде, Восточно-Казахстанский технический университет им. Д. Серикбаева.